



ANNUAL REPORT 2022



**LUTHERAN CAMPUS MINISTRY
AT THE UNIVERSITY OF
WASHINGTON**



TABLE OF CONTENTS



01

From our President

A look at the year past and the year forward from our Board president, Pastor Bri Merkle

02

Pastors' Point of View

Reflections from Pastor Chelsea Globe and Pastor Joseph Li

03

Treasurer's Note

Board Treasurer Don Boelter shares our financial health and looks ahead

04-
05

Board Member Reflections

Our current Board members share why they serve and what they love about campus ministry

06-
07

Student Highlights

Notes from the students who are involved in this ministry



Our mission:
Connecting students to Christ and the Church.

FROM OUR BOARD PRESIDENT



Rev. Brianna Merkle

Board Member Since: July 2021
Church: Mountain View Lutheran, Edgewood
Day Job: Pastor at Mountain View Lutheran
Alma Maters: University of Washington,
Pacific Lutheran Theological Seminary

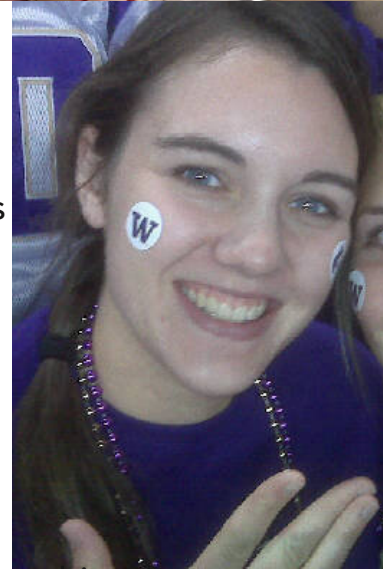
2022 was a year of laying plans for the future of Lutheran Campus Ministry at UW. The Board invested a lot of time in three major areas:

Pastor Chelsea's permanent call: 2022 was our first full year of having Pastor Chelsea as our permanently-called pastor. This brought further momentum to LCM in outreach to students, development of Wednesday evening programming, and an impressive focus on visiting congregations and increasing our donor base. The Board is very grateful to have Pastor Chelsea serving as pastor and re-developing this ministry.

Increased contribution for the International Student Ministry: This year the Board voted to substantially increase our contribution in support of ELCA Pastor Joseph Lee's work among international students at UW. He reaches international students that the LCM program traditionally does not. We also began talks with the NW WA Synod to bring Pastor Joseph fully under the employment of LCM in the future, and so fully partner these two branches of Lutheran ministry to UW students. We are eager to have two exceptional pastors in our employment and hope to share more stories of this International Student Ministry with you in the coming years.

Affirmed our commitment to being housed at University Lutheran Church in the U District: We have been renting space at ULC since re-launching our ministry and are remembering our roots of being started by this congregation many years ago. ULC offered the exciting opportunity to build an intentional space for student ministry as they remodel their church building. The LCM Board has affirmed our intention to move forward in this partnership and to contribute financially to the development of this much-needed space to be created for the well-being and spirituality of UW students.

As you can see, Lutheran Campus Ministry is growing in more than one way and the Board thanks you for your support and partnership as we seek to offer spiritual formation in the vital years of college-life.



FROM THE PASTORS

Pastor Chelsea Globe

Celebrate with me: 2022 was an incredible year for Lutheran Campus Ministry at UW! We celebrated the return of in-person programming, more opportunities to meet students on campus, re-newing our status as an official UW student club, and so much more! After accepting the permanent call to this position at the end of 2021, I was officially installed on March 13, 2022, at University Lutheran Church where campus ministry is now housed. The partnership between ULC and UW Lutherans has been fruitful and renewing for both our ministries. We look forward to doing ministry together in the U District for many years to come! We are also so excited to bring Pastor Joseph Li and his Lutheran international student ministry under our umbrella!!

As we continue to engage students, please keep this ministry in your prayers. We have big plans and goals in the coming years and we need your help to make them happen as we pursue our goal of connect students to Christ and the Church!

Pastor Joseph Li

I lead Lutheran Campus Ministry to the International Students at UW. The predecessor of this ministry was the "Ministry to Chinese Students and Scholars at UW," sharing the same site with the Lutheran Campus Ministry at the Covenant House.

When Covenant House was sold in the fall of 2019, I began to partner with the "Global Friends" program at University Presbyterian Church, seeking to use the Global Friends platform to reach out to the international students. My proposal was received with warm welcome. Since then, I have been using the venue of the Global Friends to reach out to more international students from, not limiting to the Chinese students, thus changing the ministry's name from "Ministry to Chinese Students and Scholars at UW" to "Ministry to International Students and Scholars at UW." Using the Global Friends platform, I have led many classes, developing friendships with international students, and helping to conduct Christian literature classes. Through these activities,

Christian faith, as well as the Lutheran's unique "Law and Gospel" principle are shared with the international students and with fellow volunteers at the Global Friends. I am looking forward to the steadfast support of the Lutheran Campus Ministry Board and continuing to engage in the evangelical work among the internationals with more confidence and enthusiasm.



TREASURER'S NOTE



Don Boelter



Board Member Since: January 2021

Church: Phinney Ridge Lutheran, Seattle

Day Job: Administrator for Trinity Lutheran Church & Schools in Lynnwood

Alma Mater: University of Washington

LCM is ready for another great year of ministry! Financially, ***we end FY2022-23 in very good shape.*** Thanks to the sale of our property a few years ago, we have over \$2.2 million in our banking accounts, the Mission Investment Fund (MIF), and the ELCA Endowment, which allowed us to feel confident in passing a deficit budget last year, as we continue to rebuild this ministry after a one-year hiatus and two years of COVID restrictions.

We ***significantly overperformed on our budget projections*** and ended the financial year only needing to draw a little over \$4,000 from our reserve funds, which total over \$1.4 million in checking and savings accounts. Contribution income from individuals and congregations were up very significantly thanks to ***new and more robust stewardship*** initiatives spearheaded by our campus pastor, Chelsea Globe. And, Pastor Chelsea also maintained good cost controls as we finished 3% under budgeted expenses.

However, we cannot continue to operate at a deficit indefinitely, and there are a ***couple of major new initiatives*** in the year ahead that will affect our finances and reserve funds. Specifically, we are excited about increasing our partnership with University Lutheran Church as they go through a major remodel of their facilities; our financial contribution to these efforts is still to be determined. We are equally excited about integrating the International Ministry fully into LCM, but that will require additional financial resources for ***calling a part-time bilingual campus pastor.***

I look forward to continuing to serve as Treasurer in the year ahead as we keep growing and learning how to ***serve our U-Dub students*** more effectively.

"I became interested in serving on the Board as I noticed that youth at our church were very engaged and involved, but once students left for college they seemed to become inactive in church life. These young adults need a place where they can gather with others their age and wrestle with the spiritual and existential issues that they face at that age."

BOARD MEMBER REFLECTIONS



Callie Moothart

Board Member Since: August 2017
Church: Faith Lutheran Church, Seattle
Day Job: Pastoral Intern at Mount Cross Lutheran, University Place
Alma Maters: Pacific Lutheran University, Seattle University, Luther Seminary

"Serving on the board of Lutheran campus ministry has given me a front row seat to God's presence in the lives of young people. It is a joy to support a welcoming, affirming ministry that invites young adults to explore and live out their faith during their time at the University of Washington."

"I joined the board in 2021 excited to help create what a revitalized UW campus ministry would look like. I've spent the last decade-plus working as a volunteer leader in various youth ministries focused on pre-college youth and am excited to apply those skills to a college ministry. As a bisexual man I also find a strong call to use that identity and lens to creating a ministry that supports and uplifts queer students and queer Christians. I envision a UW Lutheran Campus Ministry as a place of community and belonging, a place where students and all those who gather to feel welcome and able to safely grow into themselves in all ways. Many college Christian organizations are very conservative and support the subjugation of our BIPOC, queer, and women siblings in Christ, and I envision UW LCM as the antithesis of them, supporting the flourishing of the most marginalized among us. Creating what Rev. Dr. King called The Beloved Community."



Spencer Noble

Board Member Since: July 2021
Church: Advent Lutheran, Mill Creek
Day Job: Engineer at Crane Aerospace & Electronics
Alma Mater: Seattle Pacific University

Additional Board members:
Scott Davies, University Lutheran Church Liaison
Dennis Su, Ministry to International Students and Scholars Representative

"When I was young Campus ministry allowed me the opportunity to realize that my spiritual beliefs could belong in organized religion. Young adults need a space to ask the big questions – who am I? How do I fit into this world? How does my spirituality fit within the Lutheran Church?"



Dr. Janet Piehl, MD
Board Member Since: January 2021
Church: Holy Trinity Lutheran, Mercer Island
Day Job: Family Medicine Doctor, University of Washington Medicine
Alma Maters: University of Washington,



Rev. Paul Eldred
Board Member Since: August 2018
Church: Central Lutheran, Capital Hill, Seattle
Day Job: Pastor at Central Lutheran, Seattle
Alma Maters: Willamette University, Lutheran School of Theology at Chicago



"I have served on the Board of Directors for the Lutheran Campus Council since 2018, nearly all of that time as Vice President. I know firsthand how challenging it can be to explore matters of faith during college—especially rooted in welcoming and inclusive traditions—and I wish I'd had access to a community like Lutheran Campus Ministry during school. I am committed to supporting expansive and affirming faith communities that allow all people a place to experience God's love in their lives and deepen their commitment to following Jesus."



"It was during my time in Campus Ministry at UW that I discerned my call to ordained ministry, so I hope to help this formative ministry continue for future generations of UW students."
-Pastor Bri Merkle

Are you being called to serve on the Board? We are recruiting new members to start in summer 2023!

STUDENT HIGHLIGHTS

"I like campus ministry is because I get to have conversations with people I would not otherwise have a chance to meet, and the atmosphere is very welcoming and supportive!"
-Kirsten



"Campus Ministry is huge for me because it gives a sense of community that would otherwise be missing in grad school. I love that it's both a space for goofing around carving pumpkins or decorating Christmas trees, and also a space to have deep conversations about what faith means in the complicated world we're navigating." -Kevin

"Moving from FL to WA for graduate school was frightening. I was unsure of where I'd find my footing in an entirely new place, but I can truly say that I've found a community at the UW Lutheran campus ministry. I look forward to Wednesday nights so that I can be greeted with warm and supportive faces. This is a place that I can foresee myself attending for a long while!" -Jessica





"I attend campus ministry because it provides a place for community and assurance. It allows for open support for all people and provides answers when I'm lost or new to different perspectives."
- Keegan

"Lutheran campus ministry has allowed me to connect with my peers and other spiritually-minded individuals. It has served as a "church away from home" now that I am not attending my home church. This way I am able to continue to be spiritually minded while at university. Campus ministry has served as a way to improve my mood and mental health through any hard times I may be experiencing and I am very thankful for its services."
-Nathan



"I come to campus ministry events because I feel welcomed and supported, and feel like I can learn and grow in my faith. Pastor Chelsea is seriously so kind and welcoming, and I am extremely grateful for her leadership!"
- Grace

We have BIG plans and dreams!
You can help make them come true.

Support UW Lutherans today!



Give
online
or with
Venmo



www.uwlutherans.org/give

Mail checks to: PO Box 85401

Seattle, WA 98145

president@uwlutherans.org

pastor@uwlutherans.org

